

PALMER JOHNSON 80



Explore new horizons in style with exceptional performance and generous outdoor areas

Key Features

Features a spacious and stylish design, offering high-performance cruising with a sleek aluminium hull and superstructure. With a generous 6.71m beam and expansive decks, it provides ample space for gatherings, relaxation, and al fresco dining. Designed for both luxury and speed, it boasts a low draft of 1.2m, making it perfect for cruising close to shorelines and exploring hidden gems.

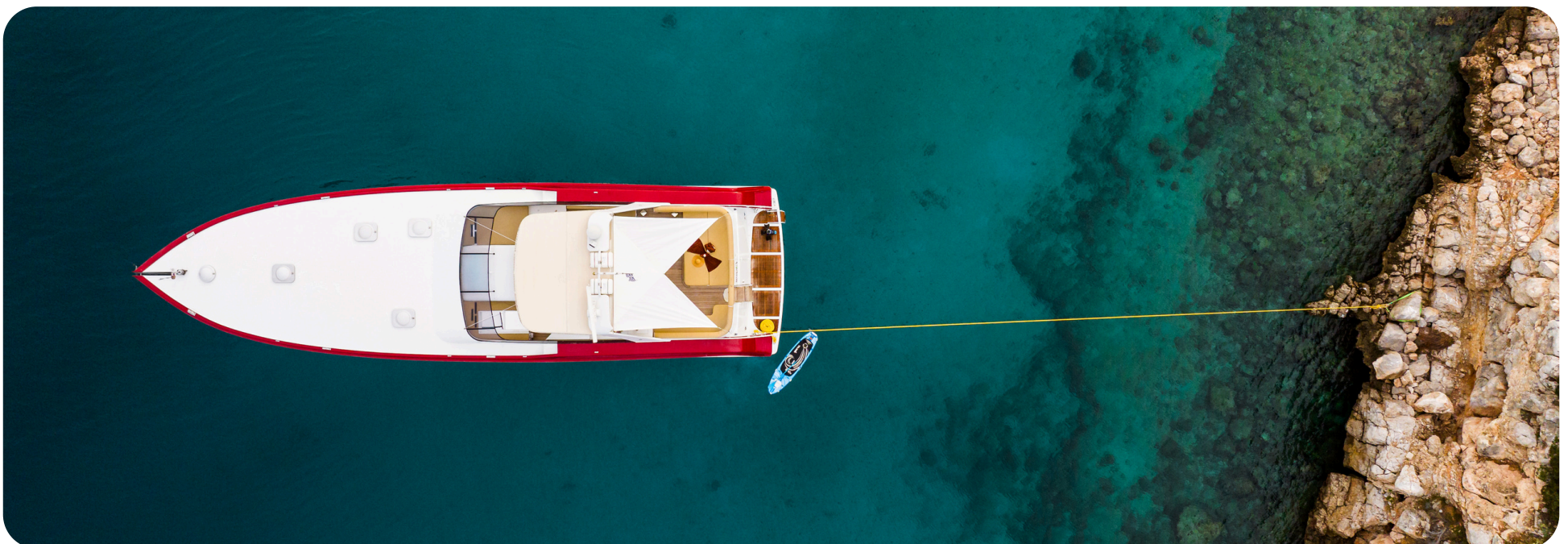
A comfortable and elegant interior includes three double cabins and a sofa bed, ensuring flexibility for overnight stays.

A professional crew of 3 ensures an exceptional yachting experience, with top-tier service tailored to every journey.

Length: 24.4m/80ft

Cabins: 3 | **Crew:** 3

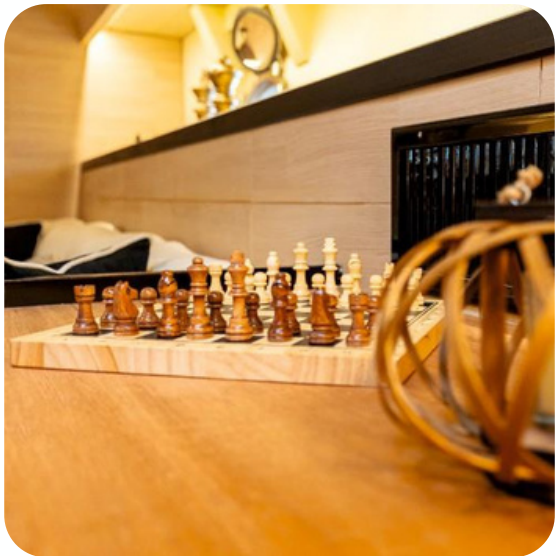
Cruising: 35 knots | **Top Speed:** 45 knots







Main Saloon

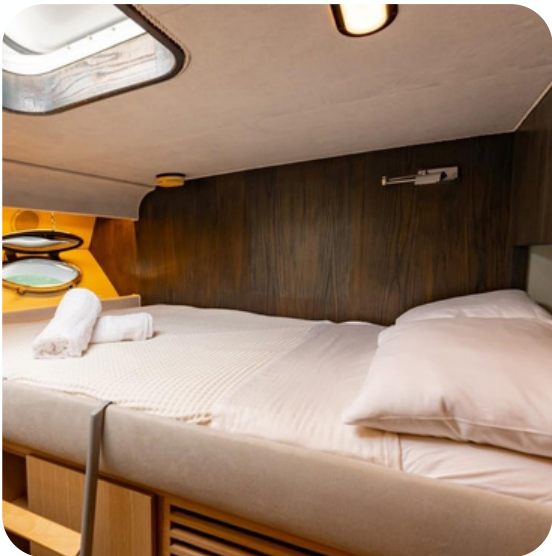


Master Cabin

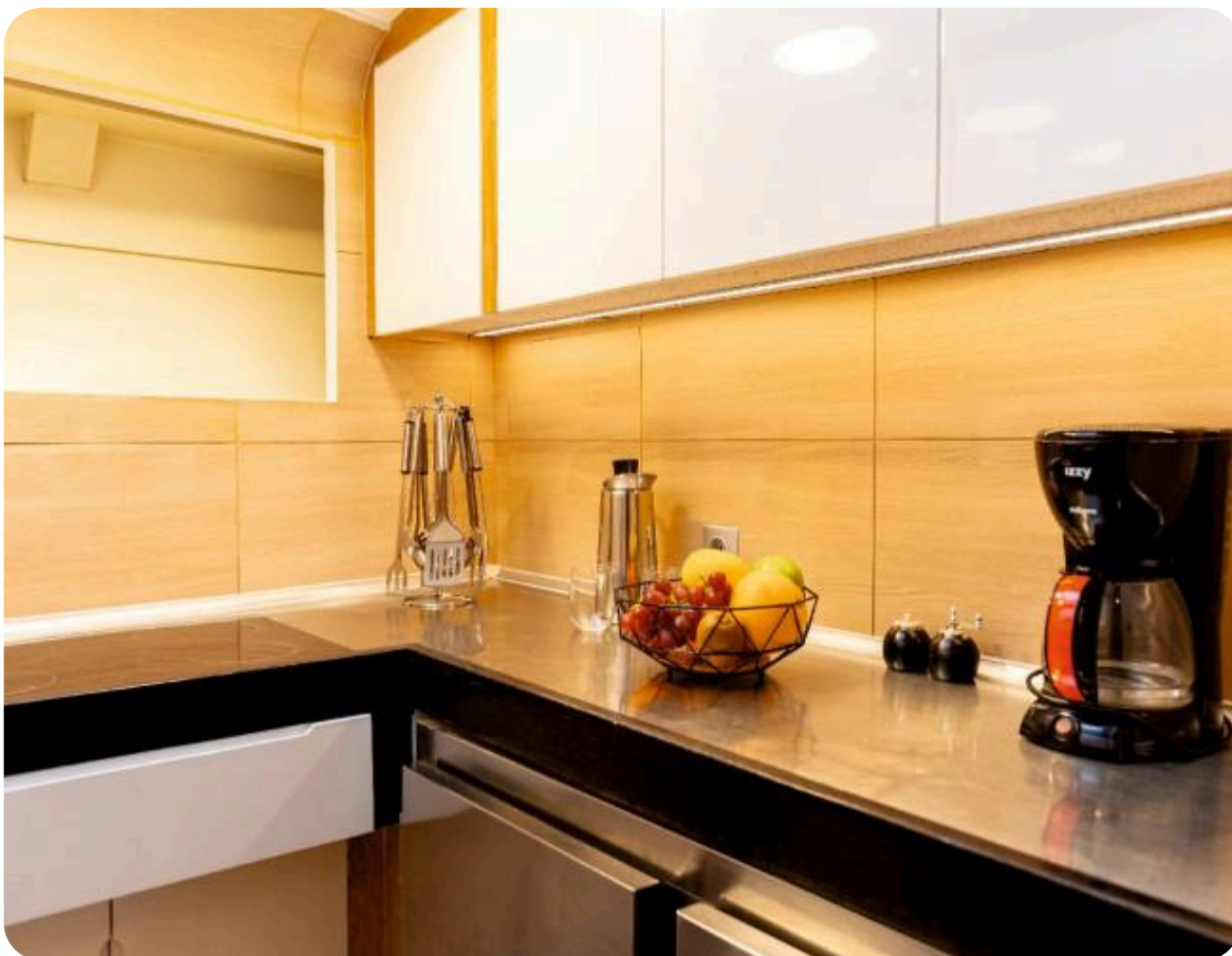
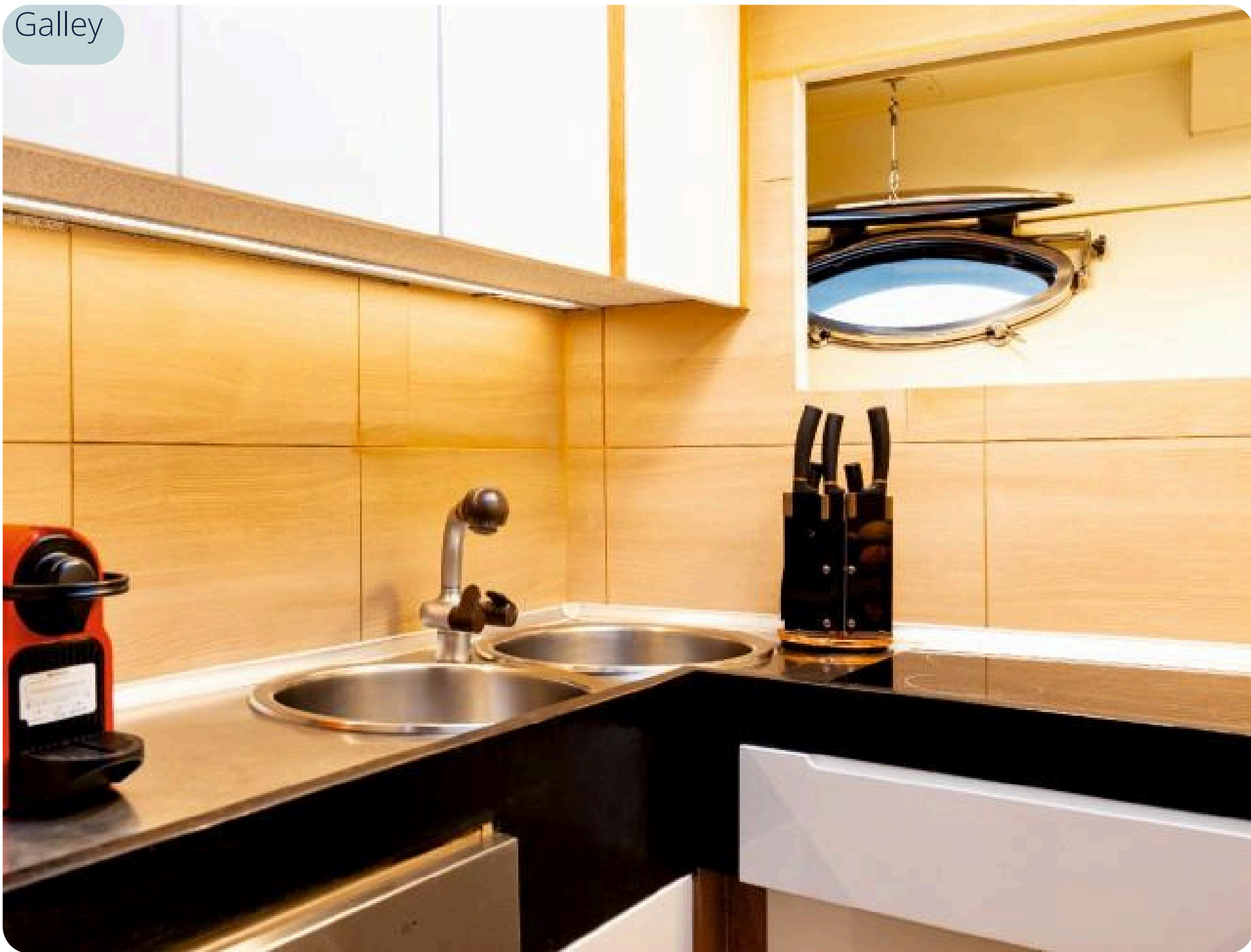




VIP Cabins



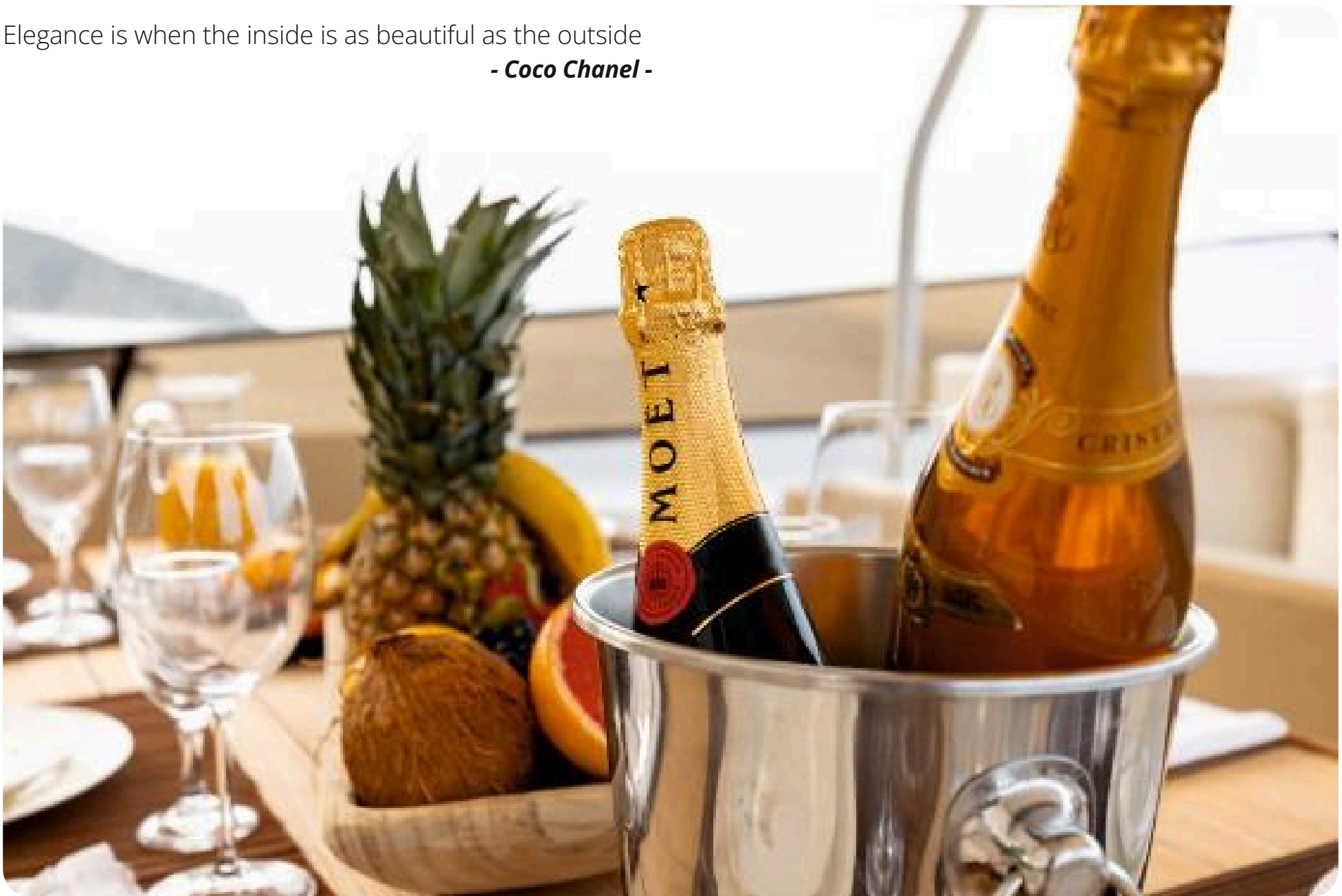
Galley



Al-fresco Dining

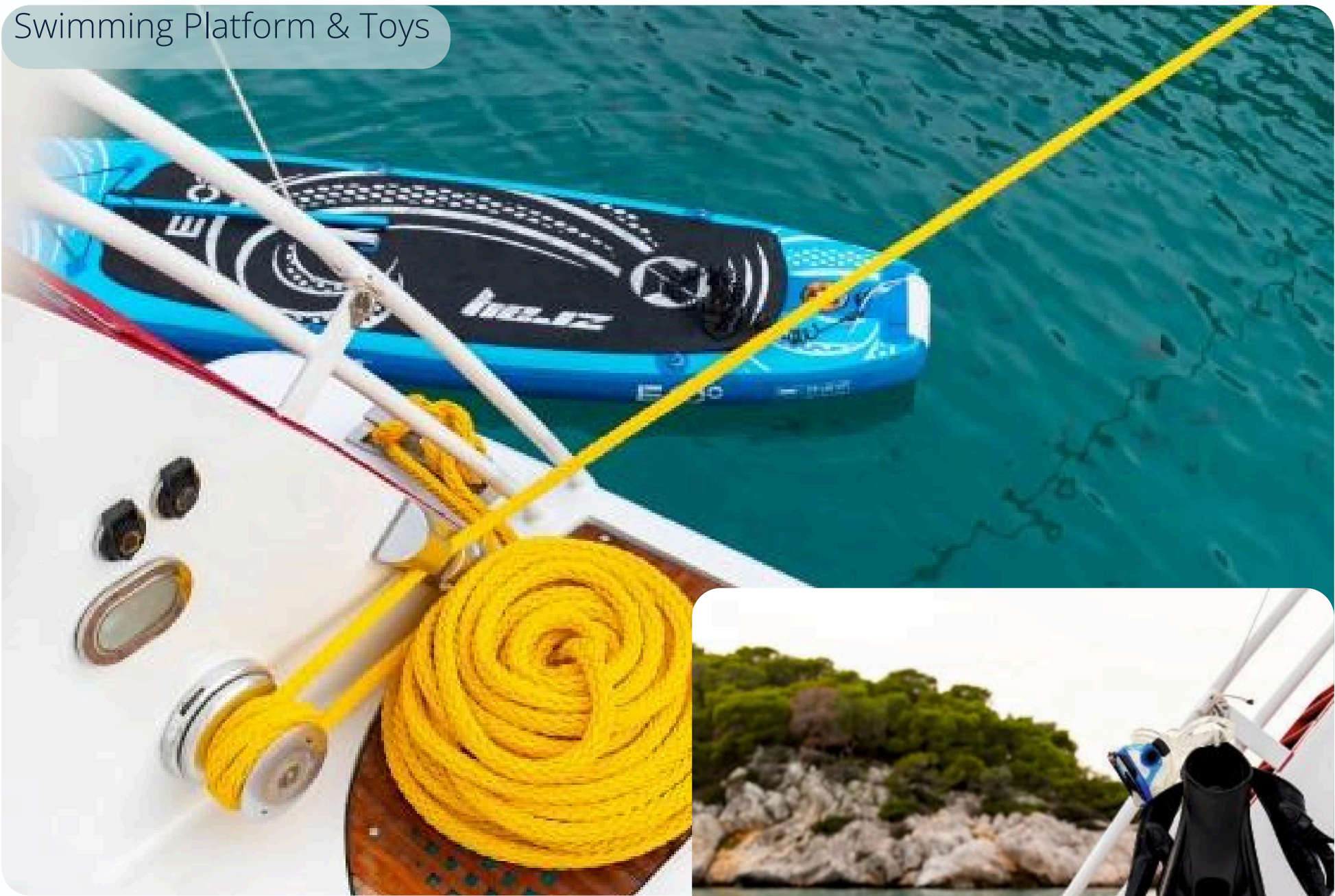


Elegance is when the inside is as beautiful as the outside
- **Coco Chanel** -





Swimming Platform & Toys









SPECIFICATIONS

ACCOMMODATION

Number of guests: 9

Number of cabins: 3

Cabin configuration: 3 double beds + 1 Sofa bed

Day Trip Passengers: 12

(for additional guests on board, to be advised)

**for daily charters available only 1 cabin + 1 wc facilities*

Crew: 3

Build/Refit: 1990/2023

WATERSPORTS & TOYS (long term charters)

Included:

Tender
Snorkeling Equipment
Paddle Boards (SUP)
Fishing Equipment

Extra Charge (rental fee upon request)

Sea bob

Engines: 2 x MTU
Fuel Consumption: 500 lt/hr
Cruising Speed: 35 knots | **Top Speed:** 45 knots
Water Wank: 1000lt
Beam: 6.1m / 20m

FACILITIES/AMENITIES

5G WIFI | A/C | Double Fridge | Watermaker |
Telescopic Hydraulic Gangway | Wet Bar with Fridge &
Sink | Full Tenc Cover in Cockpit | Underwater Lights |
BBQ Grill & Bar | TV, Video Club, Music

WATERSPORTS & TOYS (daily charters)

Included:

Tender
Snorkeling Equipment
Fishing Equipment

Extra Charge (rental fee upon request)

Sea Bob
Paddle Boards (SUP)

This document is not contractual. All specifications are given in good faith and offered for informational purposes only. The publisher and company do not warrant or assume any legal liability or responsibility for the accuracy, completeness, or usefulness of any information and/or images displayed. Yacht inventory, specifications and charter prices are subject to change without prior notice. None of the text and/or images used in this brochure may be reproduced without written consent from the publisher.