

PERSHING 54



Elevate your horizon: where luxury meets velocity

Key Features

The Pershing 54 is a high-performance open yacht that masterfully blends luxury with speed, designed for exhilarating daily and weekly cruises. Crafted with sleek Italian styling and meticulous attention to detail, this yacht offers an unmatched experience on the water.

Step aboard to find an inviting alfresco dining area and a stylish interior salon, perfect for relaxing or entertaining guests.

Large windows flood the space with natural light, enhancing the elegant ambiance.

Below deck, the Pershing 54 features thoughtfully designed cabins, including a spacious master suite, a twin cabin with shared facilities.

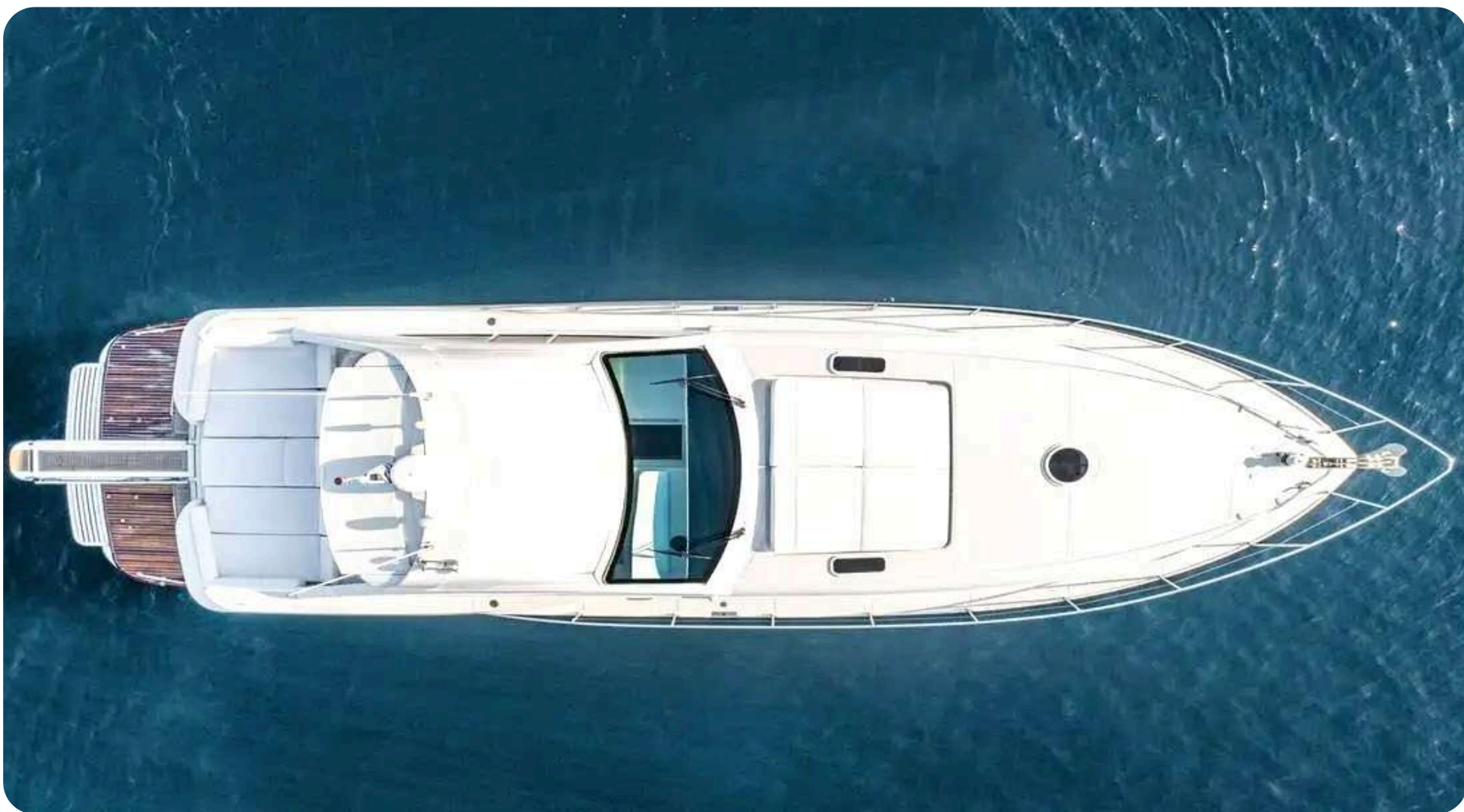
Meticulously crafted with tasteful interiors, and inviting alfresco dining, she will enchant you, promising an unparalleled journey & experience on board.

Length overall: 53 ft / 16.40m

Cabins: 3 | **Crew:** 2

Cruising Speed: 35 knots | **Top Speed:** 48 knots





“ A Masterpiece of nautical engineering with sleek lines and refinement, she promises an unparalleled journey & experience on board. An emblem of prestige, performance and unmatched pleasure on the limitless seas.”



Interior Living



Exterior Aft deck and Leisure Area



Exterior Aft Deck Salon & Leisure Area

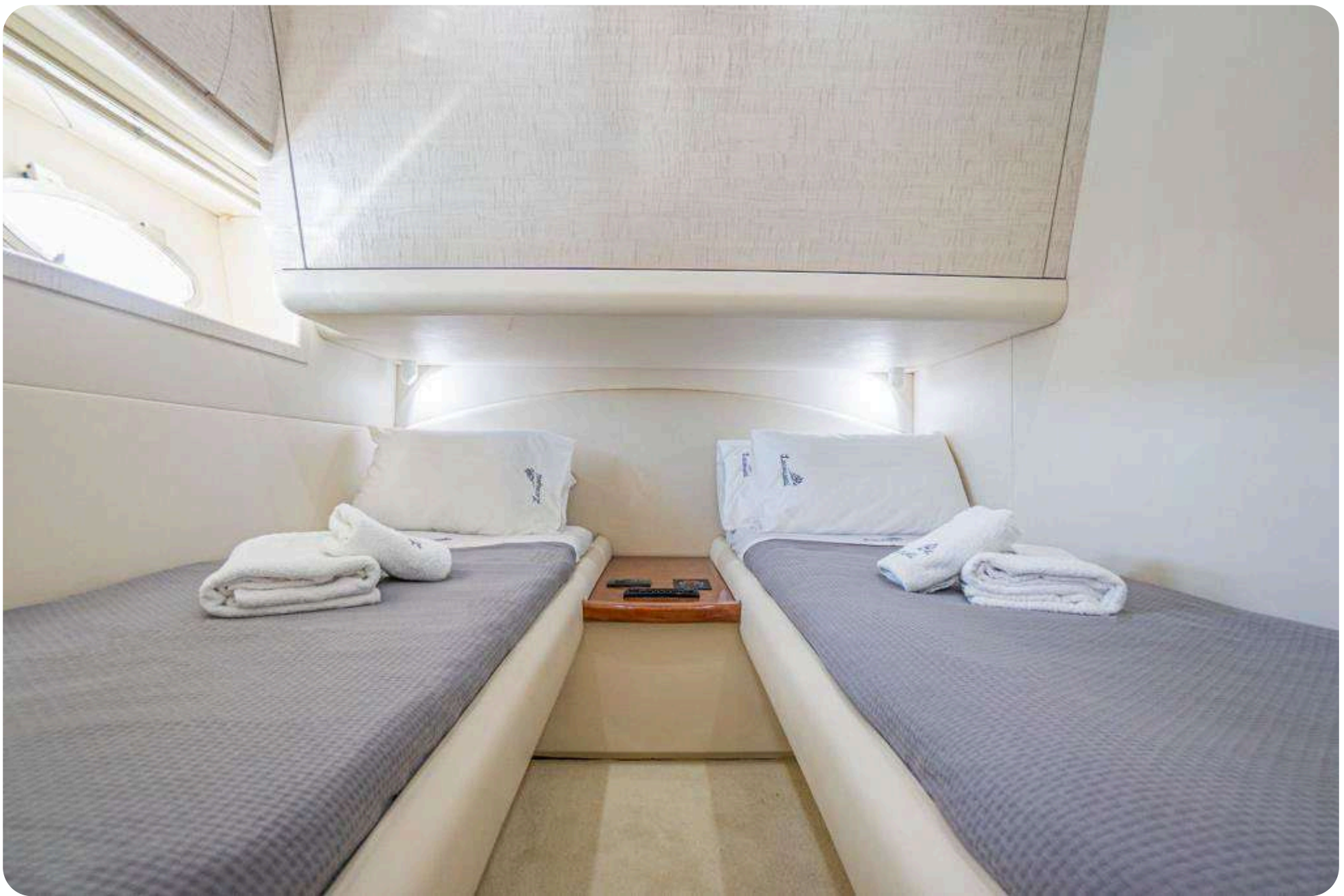


Master Cabin in Bow with Ensuite Facilities



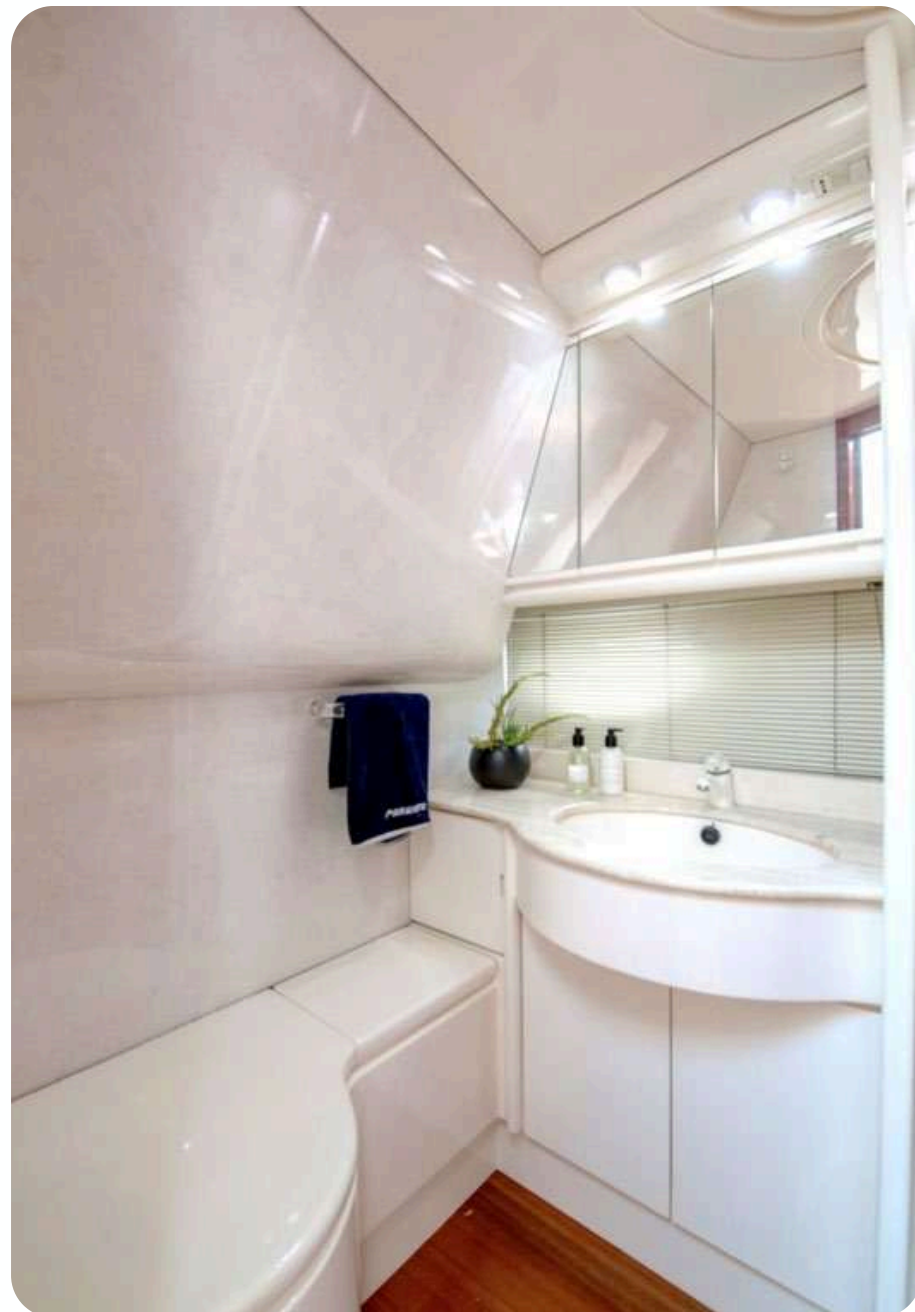
Thoughtfully designed cabins offer ease of access and a private haven for your comfort.





Twin Cabin with sharing facilities located in the interior salon.

1 Pullman bed available for a small child in the twin cabin.



3rd Cabin upon request only
(cabin crew)



Double Cabin in Aft with Ensuite Facilities









SPECIFICATIONS

ACCOMMODATION

Number of guests: 4 - 5*

Number of cabins: 2

Cabin configuration: 1 Master Cabin with ensuite facilities, 1 Twin with access to a day head wc and bath facilities, with 1 pullman bed * (for up to 10 yrs.old child)

For 3 cabins on board accomodation, please inquire with your charter broker.

Day Trip Passengers: 10

**for daily charters available only 1 cabin + 1 wc facilities*

Crew: 2

Build/Refit: 2000/2024

WATERSPORTS & TOYS (long term charters)

Included:
Snorkeling Gear

Extra Charge (rental fee upon request)
Seabob | SUP

Engines: 2 x 1,200 HP MAN
Fuel Consumption: 370 lt/hr
Cruising Speed: 35 knots | **Top Speed:** 48 knots
Fuel Capacity: 2900 lt
Water Capacity: 600 lt
Electricity: 220V
Generator: 9kW Kohler
Beam: 4.56m /14.96ft

FACILITIES

Alfresco Dining Area | Stylish Interior Salon | Teak-Laid Deck | Sunbathing Area | Wet Bar | Cockpit
Fridge: 3 | Air Conditioning | WiFi

WATERSPORTS & TOYS (daily charters)

Included:
Snorkeling Gear

Extra Charge (rental fee upon request)
Seabob | SUP

This document is not contractual. All specifications are given in good faith and offered for informational purposes only. The publisher and company do not warrant or assume any legal liability or responsibility for the accuracy, completeness, or usefulness of any information and/or images displayed. Yacht inventory, specifications and charter prices are subject to change without prior notice. None of the text and/or images used in this brochure may be reproduced without written consent from the publisher.